



4A

MASTER STATEROOM
WITH HYDRAULIC
BALCONY

MULTILINGUAL,
MULTICULTURAL
CREW

INDIVIDUAL AIR
CONDITIONING
SYSTEM

Length: 38.50 meters

Guests: 10

Total Crew: 6

Summer Cruising Areas: France, Corsica, South of France, Italy, Naples, Riviera, Sardinia, Sicily

Available in the summer from

Euro **110.000** / week

Available in the winter from

Euro **110.000** / week

The outer design of the Sanlorenzo 40 does not go unnoticed. Its dark metallic grey colour, grants it an intriguing appearance. Its sharp lines underline its high performance. Remarkable are the four folding platforms that create four exclusive lateral terraces on the main deck. The lateral doors on the upper deck open up in the shape of a seagull wing. On the main deck the lateral hallways forward have been suppressed to give more amplitude and privacy to the owner's cabin. In order to sharpen the lines of the yacht and to reduce its balance to the maximum, aiming to provide the required inner comfort, the final height of the yacht has been reduced as much as possible so that there is only a unique steering position, an upper one.

Entering the saloon it is immediately noticeable there is no dining room, instead this generous space is destined for conversation and relaxation. The minimalist decoration is the result of a careful selection of furniture underlined by a conscientious study of the artificial illumination based on the use of light lines in the ceilings and the use of indirect light. The walnut wood predominates throughout the yacht with two finishes, a clearer one for the floor and a more classic one for the furniture and the bulkheads in combination with lacquered objects and leather.

The owner's cabin is located on the main deck. Special features here are the "folding up" private balcony and in the en-suite bathroom a whirlpool bathtub from which a sliding window allows to talk with whomever might be in the gym or to have direct views to the sea. The four guest cabins, all with en-suite facilities, are located on lower deck.

The upper deck welcomes the steering position, the sky lounge and an outdoor aft deck that can ideally be used as entertainment, living and dining area. The fly bridge is equipped with the only real dining room table on board.

Since spring 2009 the yacht features a retractable sun awning which covers the dining area on the fly bridge. This sun awning can also be extended to cover the two L-shaped sofas.

She is built to comply to MCA and ABS standards. With a cruising speed of 22 knots, a maximum speed of 26 knots and a range of 800 nm from her 30000 litre fuel tanks, she is the perfect combination of performance and luxury.

4A has a professional crew of six who are looking forward to welcoming you on board.

YACHT DETAILS

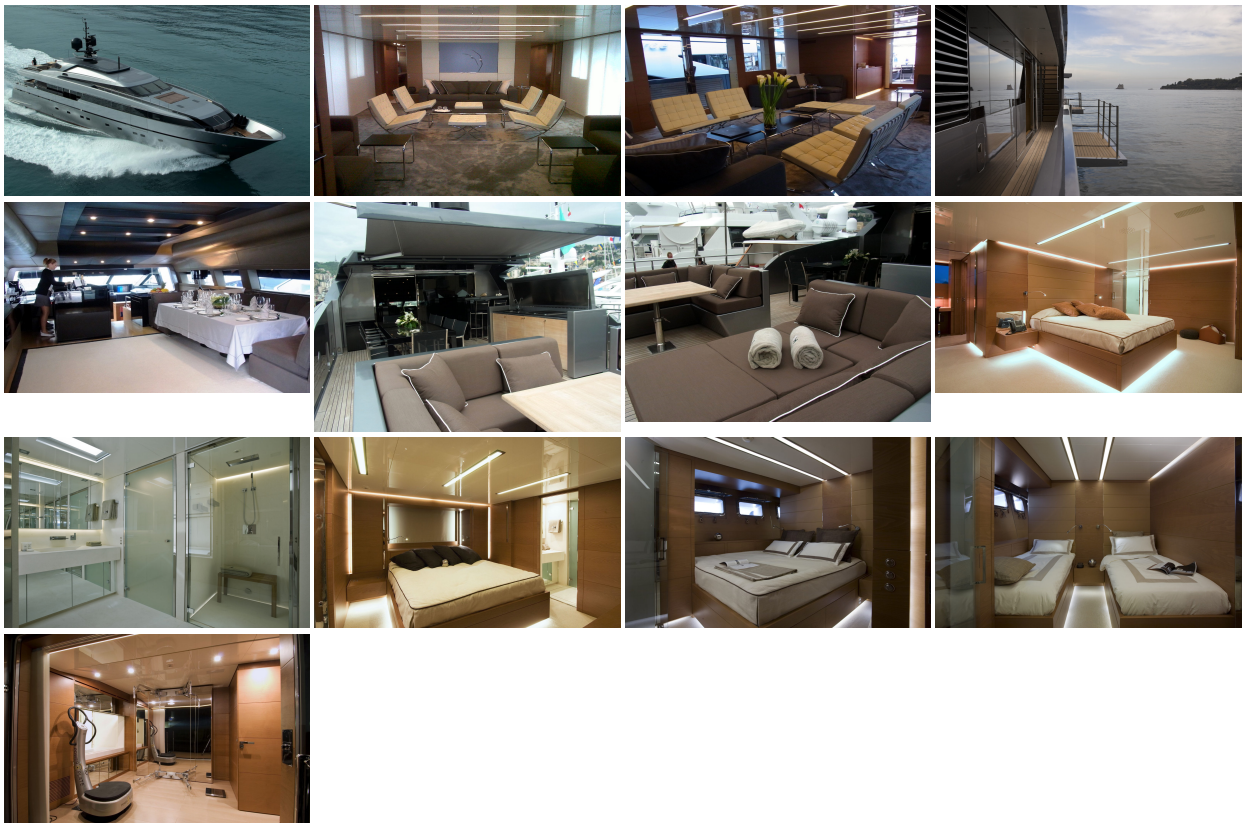
Guests:	10	Total Staterooms:	5
Total Crew:	6	Length:	38.50 meters
Built:	2008	Builder:	Sanlorenzo
Cruising Speed:	22 knots		

WATERTOYS

Various

Water sports Novurania DS 4.30 with 60HP
YAMAHA Outboard
Waverunner Yamaha VX 110 Cruiser 110
hp for 3 persons
2 Sea-bob underwater scooter
waterski, wakeboard, 3m banana boat, 2m
x 1,5m mattress type "Turbo Tube" with
handles

Gym equipment: Power Plate and
Multipurpose Technogym



This document is not contractual. All specifications are given in good faith and offered for informational purposes only. AqvaLuxe does not warrant or assume any legal liability or responsibility for the accuracy, completeness, or usefulness of any information and/or images displayed. Yacht inventory, specifications and charter prices are subject to change without prior notice. None of the text and/or images used in this brochure may be reproduced without written consent from the publisher.

AqvaLuxe Yachts, L'Hirondelle - 15, Rue Princesse Antoinette 98000 Monte Carlo Monaco.
Tel: +377 97 70 31 36 Fax: +377 97 70 31 37 Email: info@aqvaluxe.com
